

CERM-O Regulation No. 10-1-45	Department of the Army U.S. Army Corps of Engineers Washington, DC 20314-1000	ER 10-1-45 1 May 93
	Organization and Functions U.S. ARMY ENGINEER TOPOGRAPHIC CENTER (TEC)	
	<b>Distribution Restriction Statement</b> Approved for public release; distribution is unlimited.	

DEPARTMENT OF THE ARMY  
U.S. Army Corps of Engineers  
Washington, DC 20314-1000

ER 10-1-45

CERM-0

Regulation  
No. 10-1-45

1 June 1993

Organization and Functions  
U.S. ARMY TOPOGRAPHIC ENGINEERING CENTER

1. PURPOSE. This regulation defines the mission and establishes the organization of the U.S. Army Topographic Engineering Center (TEC).
2. APPLICABILITY. This regulation is applicable to all HQUSACE/OCE elements, major subordinate commands, districts, laboratories and field operating activities.
3. ESTABLISHMENT. The U.S. Army Topographic Engineering Center (TEC) is a field operating activity of USACE. It was originally established as the U.S. Army Engineer Geodesy, Intelligence and Mapping Research and Development Agency (GIMRADA) by Office of the Chief of Engineers (OCE) General Order (GO) 22, 2 August 1960, and continued in that status by OCE GO 29, 3 October 1961. It was redesignated the U.S. Army Engineer Topographic Laboratories (ETL) by OCE GO 13, 31 July 1967; reassigned to the U.S. Army Topographic Command by GO 15, 28 August 1968; and returned to direct control of OCE by OCE GO 11, 18 April 1972. When USACE was later established as a MACOM, ETL was organizationally placed under the MACOM. ETL was redesignated the U.S. Army Topographic Engineering Center (TEC) by USACE PO 14-1, 6 May 1991. The U.S. Army Engineer Studies Center, a separate FOA, was assigned to TEC for administrative support by USACE PO 29-1, 29 July 1991, effective 1 October 1991, and redesignated the Engineer Strategic Studies Center, (ESSC) with operational control delegated to the Associate Chief of Engineers (Strategic Initiatives). Operational control of ESSC was transferred to the Deputy Chief of Engineers on 12 February 1993.
4. MISSION. TEC is a field operating activity under the command of the Commanding General, U.S. Army Corps of Engineers (USACE). The mission of TEC is to provide soldiers and their commanders with superior knowledge of the battlefield and to apply relevant technology to solve civil problems of the Nation. This is a dual mission involving research and development (R&D) and military operations (O&M). The TEC R&D programs (both military and civil) are under the staff supervision of the USACE Director of Research and Development (DRD), and the TEC O&M programs are under the staff supervision of the Chief of Engineers. The Engineer Strategic Studies Center under the operational control of the Deputy Chief of Engineers serves as the Chief of Engineers' support center for special analyses requiring creative focus.

---

This regulation supersedes ER 10-1-45, 25 October 1987

ER 10-1-45  
1 Jun 93

5. ORGANIZATION. The approved organization of TEC is shown in Appendix A. Changes in organization structure or titles from those shown on the chart require advance approval of HQUSACE, in accordance with procedures set forth in ER 10-1-2.

6. FUNCTIONS.

a. Technology Based R&D. Under Reliance/Joint Directors of Laboratory (JDL) agreement, manages DOD Service (Army, Navy, and Air Force) research, exploratory development, and nonsystems advanced development programs in the topographic and environmental sciences and related technologies as required for military and civil applications.

b. Systems Development R&D. Manages programs funded by the Defense Mapping Agency, Advanced Research Projects Agency, Army Material Command, Program Managers, or Program Executive Officers, designed to develop topographic and related systems for garrison and Army field use.

c. Digital Topographic Data (DTD) Management. Coordinates and validates Army tactical DTD requirements, recommends hardware and validates software to maximize DTD cost-effectiveness, standardization and interoperability within the Army and DOD.

d. Topographic Production. Maintains and operates the Army's tactical terrain, water resources, and climatological information repository. Produces specialized terrain, hydrological and climatological analyses; military geography studies; and terrain intelligence. Produces and transforms specialized DTD. Manages DOD's world wide water resource data base and Water Detection Response Team.

e. Army Topographic Field Unit Support. Supports Army field topographic units with technology, equipment, training, data bases, etc., required for their operational missions.

f. Strategic Studies. As the USACE analytical study center, ESSC concentrates on strategic engineering and related engineering issues that encompass environmental, infrastructure, nation assistance, support of the Army and other priority mission issues at the vanguard of the Chief of Engineers' concern.

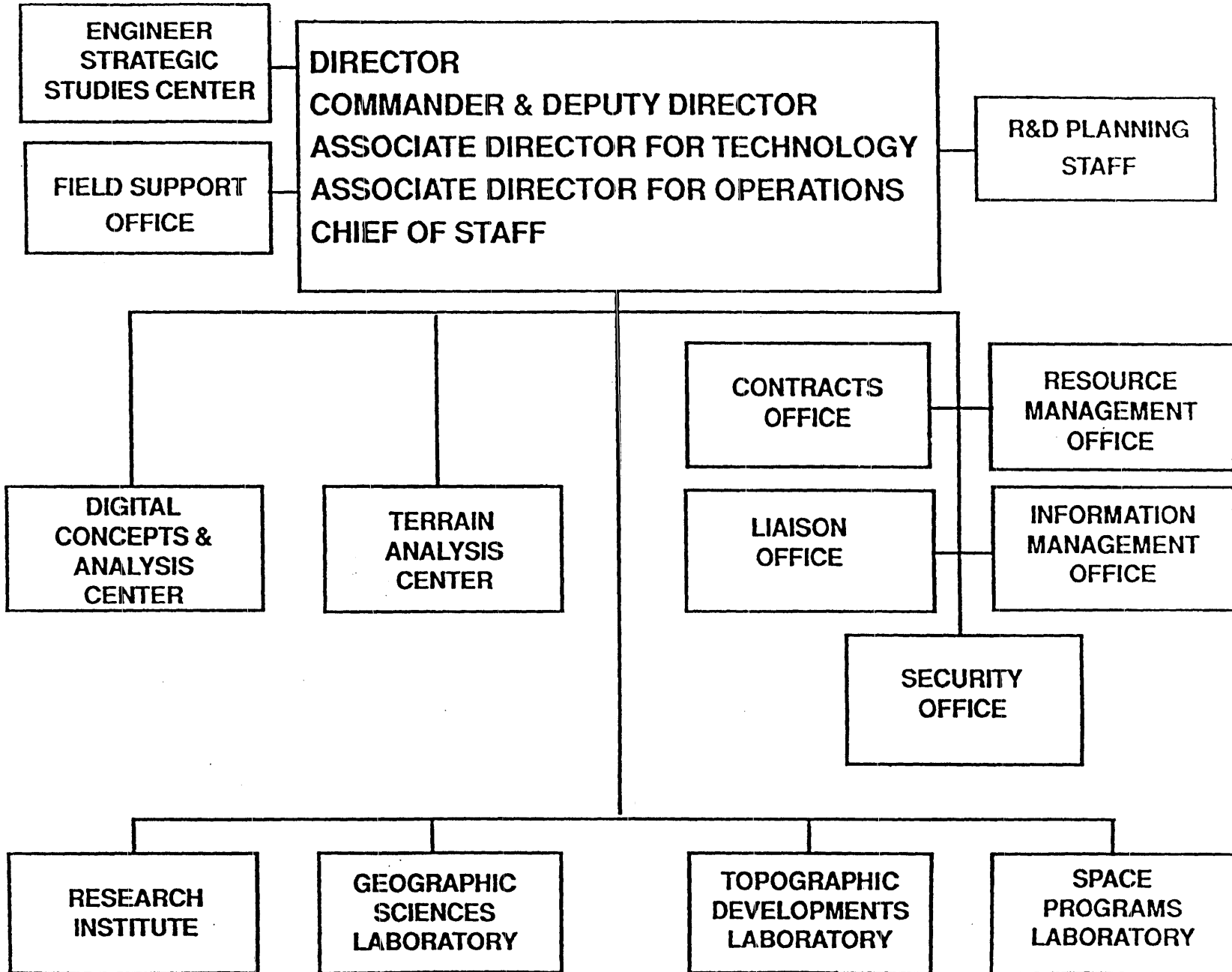
FOR THE COMMANDER:



WILLIAM D. BROWN  
Colonel, Corps of Engineers  
Chief of Staff

1 Appendix  
APP A - Organization Chart

ORGANIZATION CHART



A-1

APPENDIX A

ER 10-1-45  
1 Jun 93