

CERM-MO Regulation No. 10-1-25	Department of the Army U.S. Army Corps of Engineers Washington, DC 20314-1000	ER 10-1-25 30 Jul 87
	Organization and Functions  U.S. ARMY COLD REGIONS RESEARCH AND ENGINEERING LABORATORY	
	<b>Distribution Restriction Statement</b> Approved for public release; distribution is unlimited.	

DEPARTMENT OF THE ARMY  
U.S. Army Corps of Engineers  
Washington, D.C. 20314-1000

CERM-MO

Regulation  
No. 10-1-25

30 July 1987

Organization and Functions  
U.S ARMY COLD REGIONS RESEARCH AND ENGINEERING LABORATORY

1. Purpose. This regulation defines the mission and establishes the organization structure of the U.S. Army Cold Regions Research and Engineering Laboratory (USACRREL).
2. Applicability. This regulation is applicable to all USACE/OCE elements and all field operating activities.
3. Establishment. The U.S. Army Cold Regions Research and Engineering Laboratory was reassigned from the U.S Army Material Command to the jurisdiction of the Chief of Engineers on 1 July 1969 by DA General Order No 44, 8 July 1969.
4. Mission. The USACRREL, as a field operating activity of the Corps of Engineers, under the command of the Commanding General, USACE, and under the staff supervision of the Director of Research and Development:
  - a. Conducts and coordinates research on the cold regions of the world and the effects of low temperatures on materials, materiel, and operations in support of the civil works and military missions of the Chief of Engineers, and other DOD and Federal agencies.
  - b. Conducts research, investigations, and engineering studies pertaining to development of new and improved techniques, materials, and criteria for planning, design, construction, operation, and maintenance of permanent and expedient military and civil works facilities in cold environments.
  - c. Conducts research and engineering studies to characterize the environment and its impact on performance requirements of civil works activities.
  - d. Conducts research and test programs necessary to characterized the cold regions environment to permit the development of effective electro-optical sensor control systems and other weapon systems hardware.
  - e. Conducts research and engineering studies to provide technology/ support to the civil works programs and to influence Army doctrine and operations in cold regions to enhance mobility, survivability, and operational readiness.

---

This regulation supersedes ER 10-1-25, 16 March 1981

ER 10-1-25  
30 Jul 87

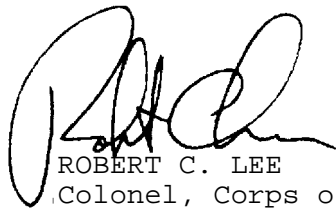
f. Performs studies and research as required by agreements between USACE/OCE and other Army and government agencies.

g. Provides, upon request, support to the program for updating CE guide specifications, technical manuals, and other criteria documents within assigned areas.

h. Conceives, plans, and conducts training courses in assigned technical fields for Corps personnel as directed by the Commander USACE.

5. Organization. The approved organization of USACRREL is shown in Appendix A. Changes to organization structure or titles from those shown on the chart require advance approval of HQUSACE in accordance with procedures set forth in ER 10-1-2.

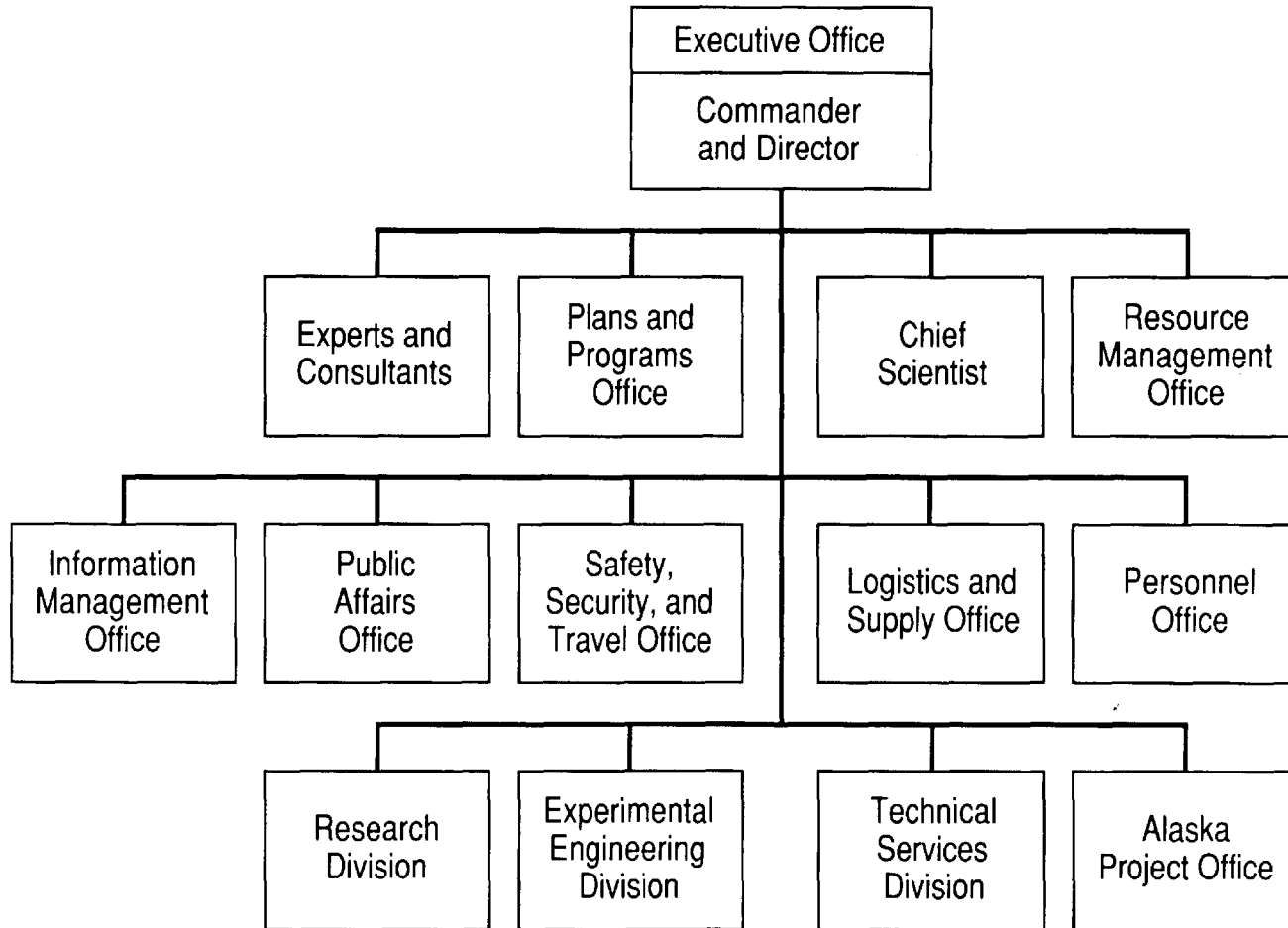
FOR THE COMMANDER:



ROBERT C. LEE  
Colonel, Corps of Engineers  
Chief of Staff

1 Appendix  
Organization Chart

# U.S. Army Cold Regions Research and Engineering Laboratory



A-1

Appendix A

ER 10-1-25  
30 Jul 87